

Bazaar

Harpers

April 2008 £3.80



10
INSTANT
STYLE
UPDATES

HOW
TO GET
FRESH
SPRING
SKIN

THE BRITISH
HEALTH FOOD
SCANDAL
BAZAAR
INVESTIGATES

FASHION'S
NEW
MUST-HAVE
LABEL

70S
REVIVAL
4 WAYS TO
WORK
THE TREND

EXCLUSIVE
BENAZIR BHUTTO'S
NIECE ON THE
ASSASSINATION

SHOP TRENDS



£365
Biba



£162 each,
Mawi



£305
Missoma



About £300,
Louis Vuitton



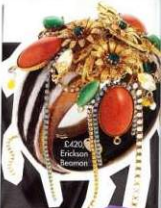
£145
Escada



£90,
Isharya at
Net-a-porter.com



£250,
Wandy Nichol
at Kabari



£420,
Erickson
Beamon

The statement cuff

The focus this spring is well and truly on the wrist, with piles of chunky bangles appearing throughout the collections

KEY RULES:

- LAYER UP BANGLES IN DIFFERENT COLOURS AND MATERIALS TO CREATE A UNIQUE LOOK.
- AN OVERSIZE CUFF WORN ON THE UPPER ARM PERFECTLY COMPLEMENTS ONE OF SPRING'S GRECIAN-STYLE DRESSES.
- DON'T GO OVERBOARD WITH OTHER ACCESSORIES – THESE PIECES MAKE ENOUGH OF AN IMPACT ON THEIR OWN.



EDITOR'S CHOICE

£865, CHANEL



£8,500,
Kara Ross

STYLIST'S TIP: embellished pieces are often very delicate, so store them in tissue to prevent damage